

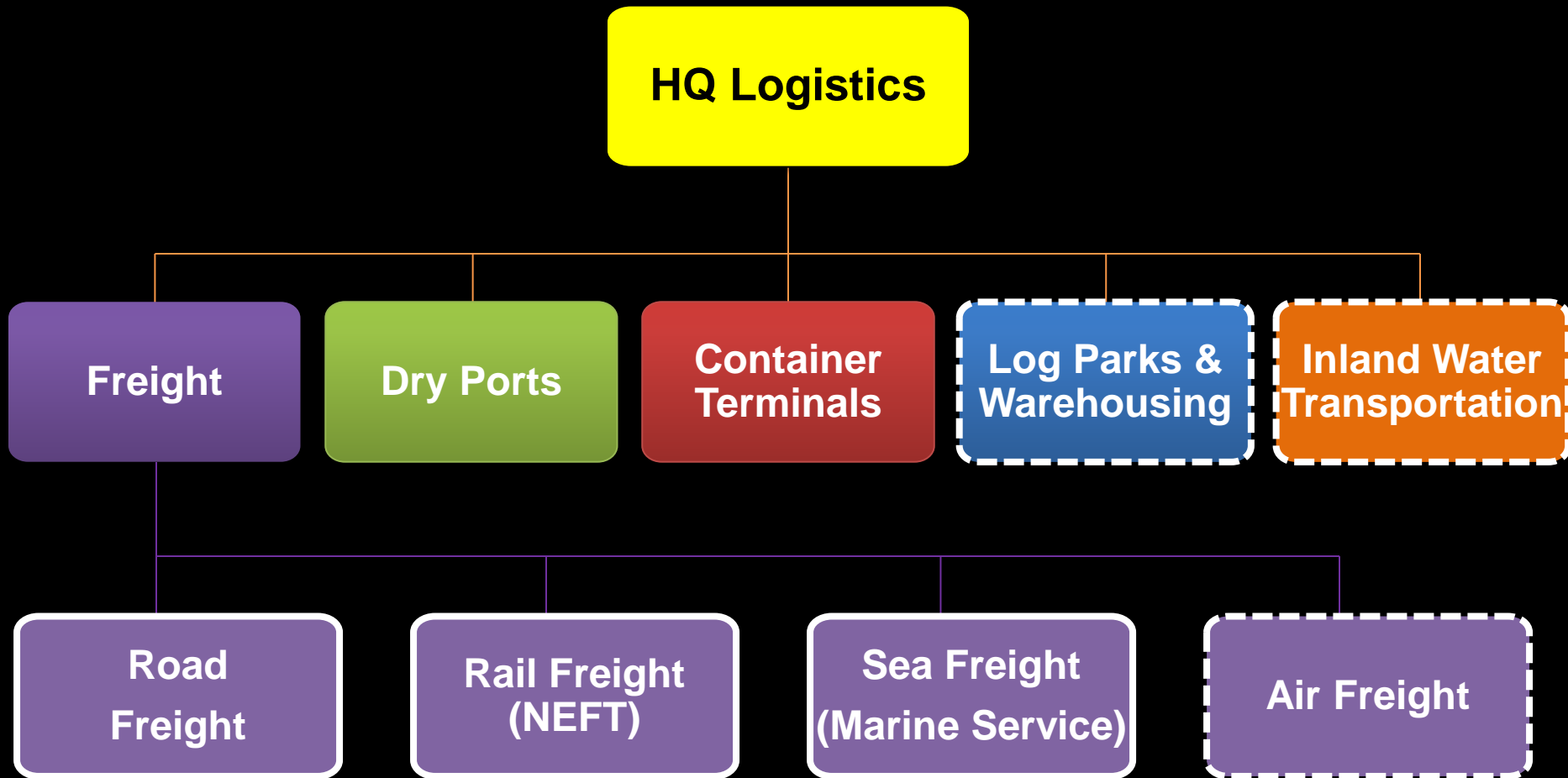


**MULTIMODAL LOGISTICS & CONSTRUCTION ORGANIZATION**

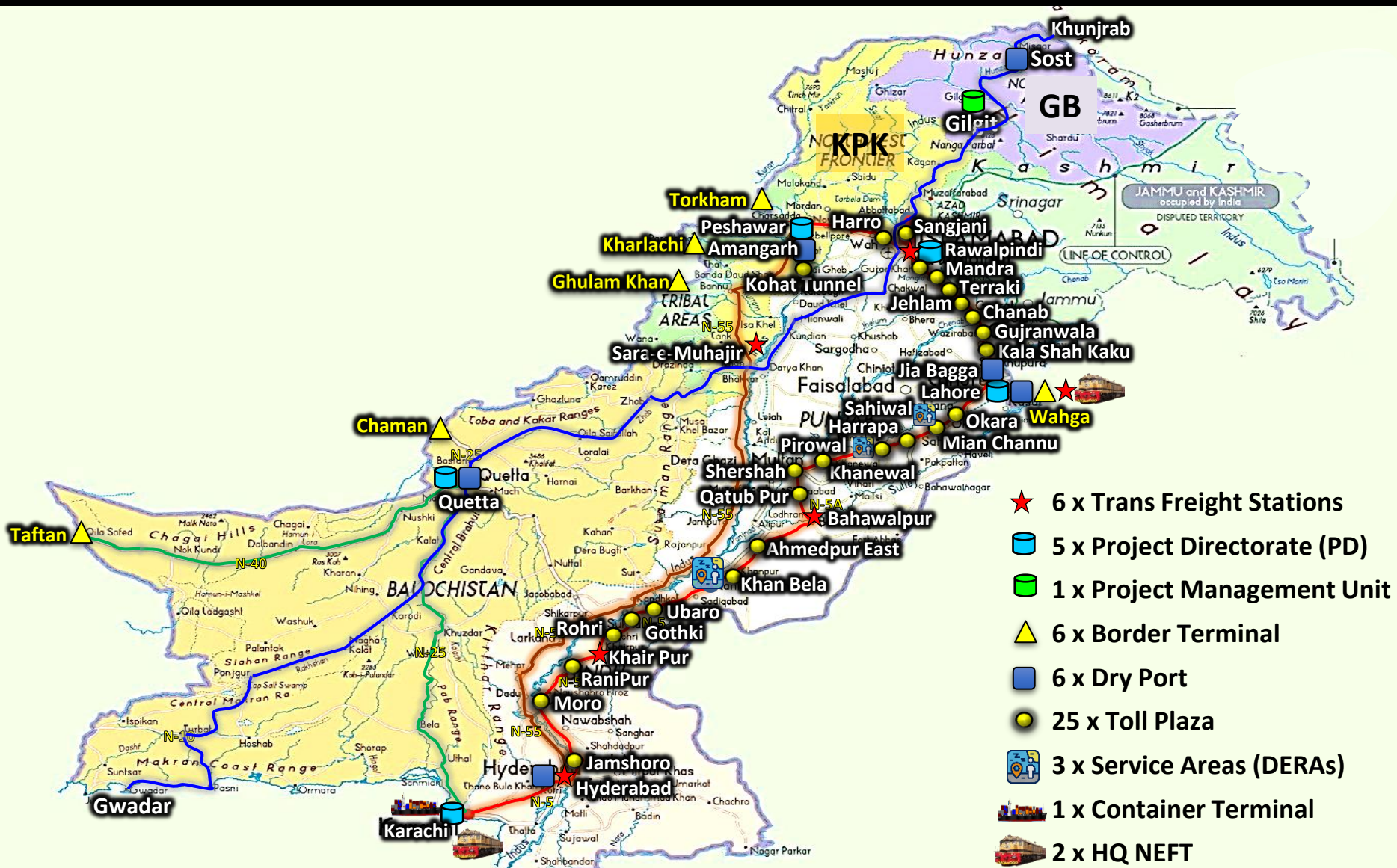
# MISSION

Emerge as a leading **logistics enterprise** while pursuing exigent business opportunities, driven by the highest ethical standards, financial discipline and international best practices. Also support **Government** of Pakistan in exigencies

# ORGANIZATION



# NLC FOOTPRINT



- ★ 6 x Trans Freight Stations
- 🚛 5 x Project Directorate (PD)
- 🏢 1 x Project Management Unit
- 🚧 6 x Border Terminal
- 🚚 6 x Dry Port
- 🚛 25 x Toll Plaza
- 🚚 3 x Service Areas (DERAs)
- 🚚 1 x Container Terminal
- 🚚 2 x HQ NEFT

# WHAT WE OFFER

- Road Freight (Logistic Services) – Mn MT moved during 2021
- TIR Operations – 1<sup>st</sup> Commercial Run to Turkey & Azerbaijan (Oct 2021)
- Logistic Parks & Warehousing Services – ( Karachi, Lahore, Faisalabad )
- Dry Ports & Container Terminals – ( Off-dock & Cross-Stuff )
- NLC Express Freight Train Service. (NEFT) (10 x locomotives)
- Marine, Air & Chartering Services, Customs Clearance & Forwarding
- Border Terminals (BTs) – 6 x BTs
- Bonded & Transit Trade Operations (APTTA & UPTTA)
- NLC Smart solutions - Tracking Services
- NLC Engineers & Tolling

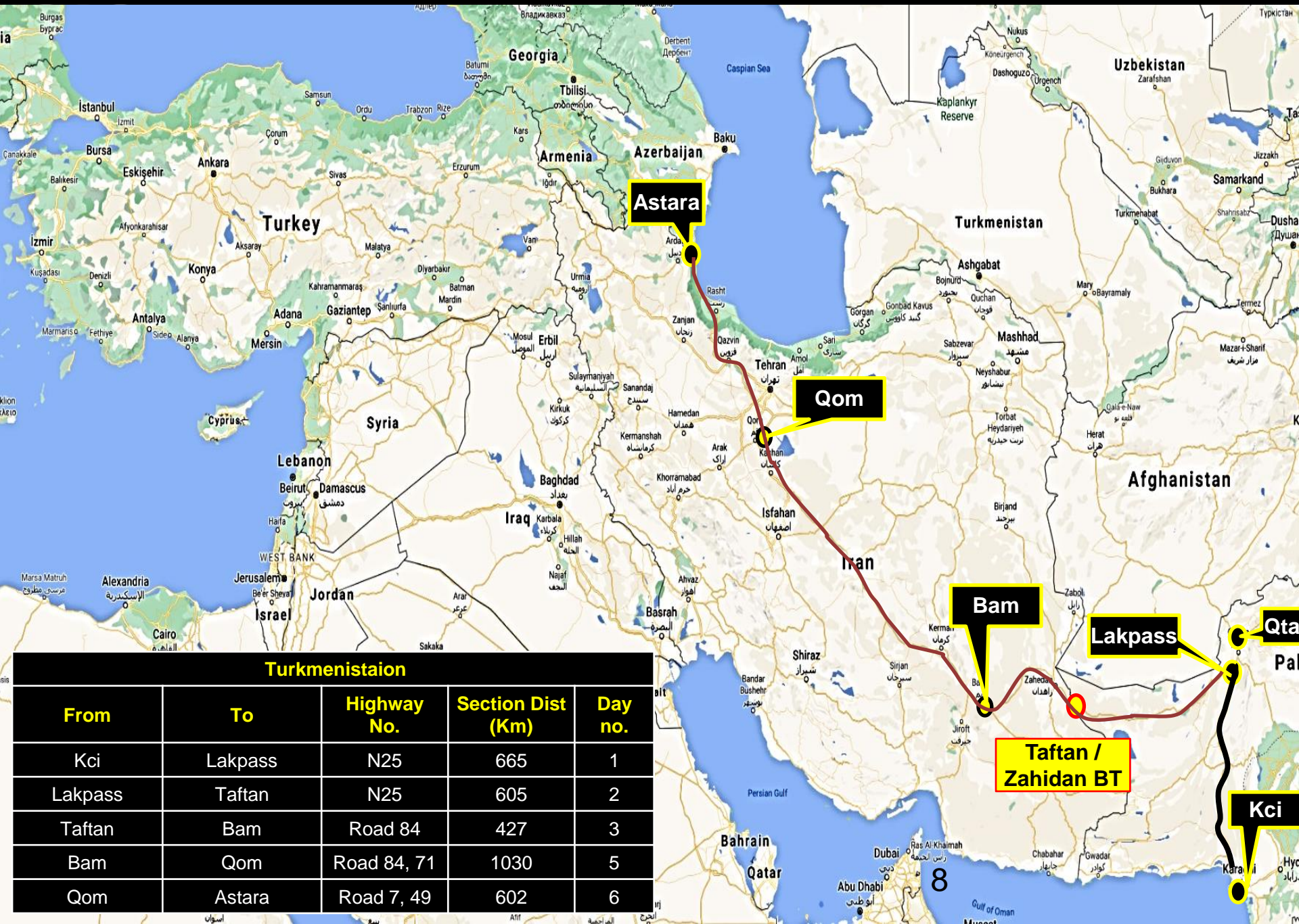
# WHAT WE OFFER

- Land Transportation - Largest Fleet in Pakistan
- TIR Transportation - Largest TIR operator in Pakistan
- Multimodal Services – Land, Air & Sea
- Border Terminal Handling Services
- Consolidation Services – Import & Export Shipments
- Warehousing Services – Largest operator in Pakistan
- Chartering Services – Air & Sea
- Project Transportation – Any Size, Any Destination
- Supply Chain Network – Integrated Solutions
- Door to Door Delivery to all EU, Russia & CARs

# NLC TIR COMMERCIAL RUN - TURKEY

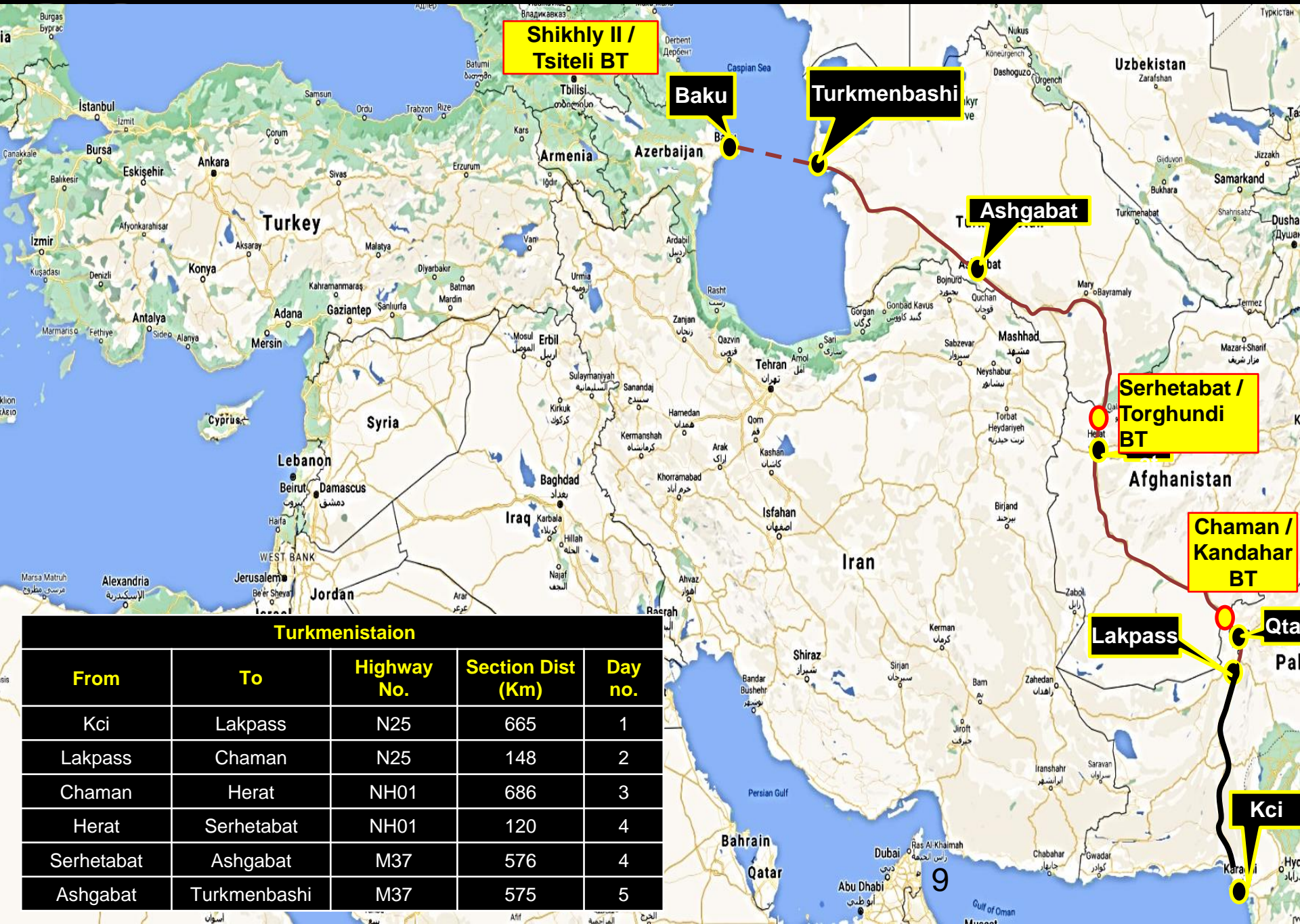


# IRAN / AZERBAIJAN



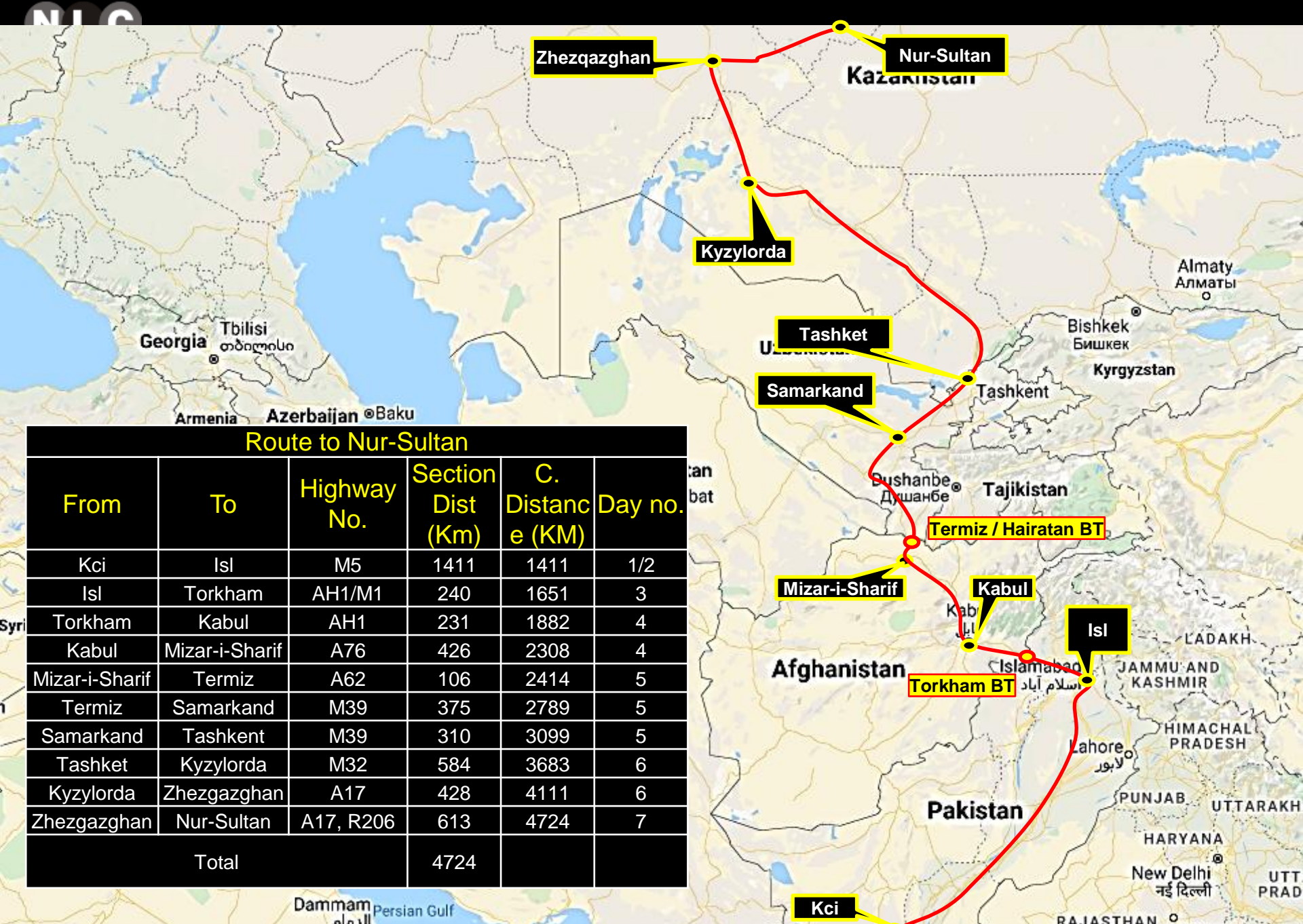
Turkmenistaion				
From	To	Highway No.	Section Dist (Km)	Day no.
Kci	Lakpass	N25	665	1
Lakpass	Taftan	N25	605	2
Taftan	Bam	Road 84	427	3
Bam	Qom	Road 84, 71	1030	5
Qom	Astara	Road 7, 49	602	6

# AZERBAIJAN – UZBEKISTAN



Turkmenistaion				
From	To	Highway No.	Section Dist (Km)	Day no.
Kci	Lakpass	N25	665	1
Lakpass	Chaman	N25	148	2
Chaman	Herat	NH01	686	3
Herat	Serhetabat	NH01	120	4
Serhetabat	Ashgabat	M37	576	4
Ashgabat	Turkmenbashi	M37	575	5

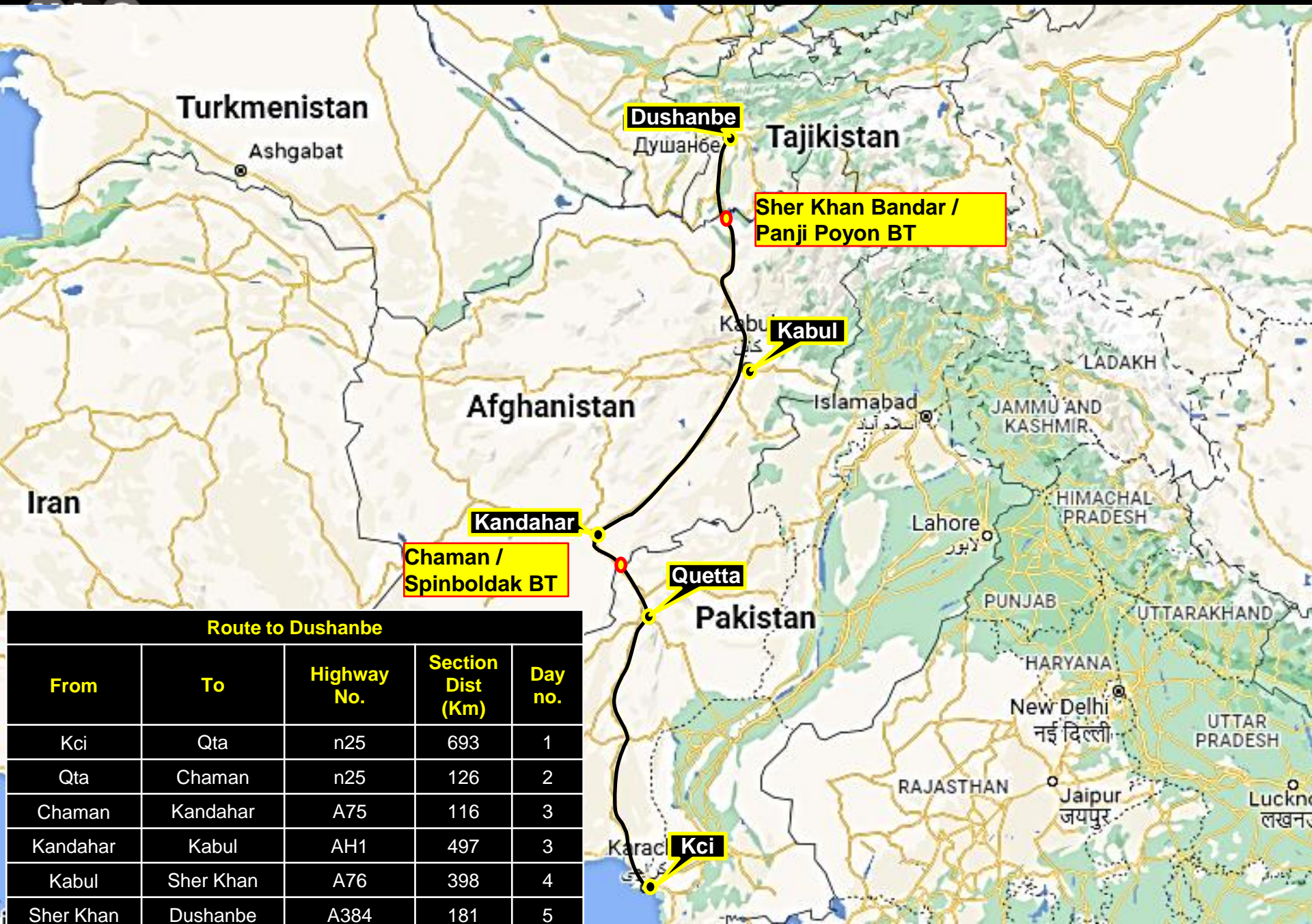
# KAZAKHSTAN



## Route to Nur-Sultan

From	To	Highway No.	Section Dist (Km)	C. Distanc e (KM)	Day no.
Kci	Isl	M5	1411	1411	1/2
Isl	Torkham	AH1/M1	240	1651	3
Torkham	Kabul	AH1	231	1882	4
Kabul	Mizar-i-Sharif	A76	426	2308	4
Mizar-i-Sharif	Termiz	A62	106	2414	5
Termiz	Samarkand	M39	375	2789	5
Samarkand	Tashkent	M39	310	3099	5
Tashket	Kyzylorda	M32	584	3683	6
Kyzylorda	Zhezhgazghan	A17	428	4111	6
Zhezhgazghan	Nur-Sultan	A17, R206	613	4724	7
Total			4724		

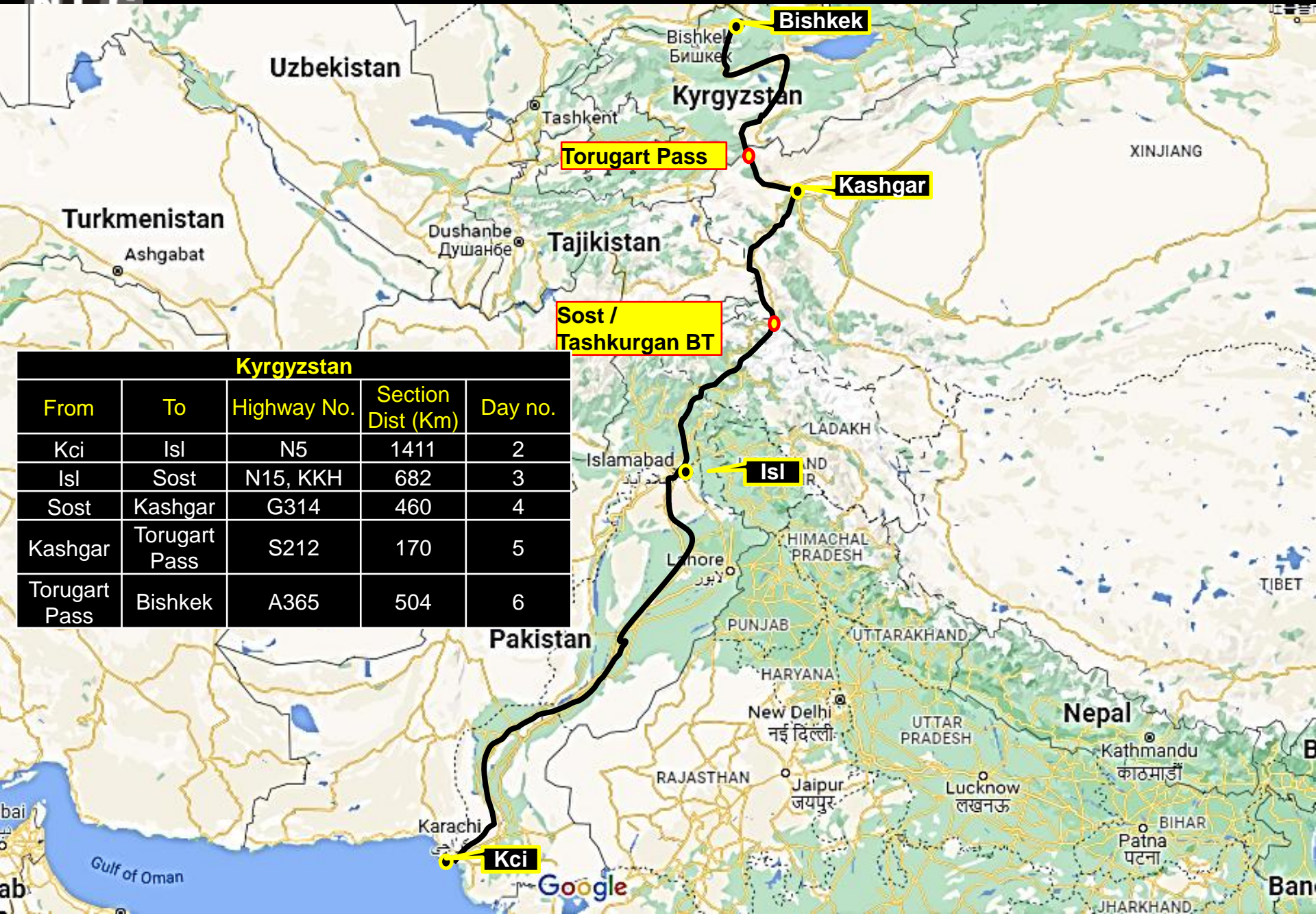
# TAJIKISTAN



## Route to Dushanbe

From	To	Highway No.	Section Dist (Km)	Day no.
Kci	Qta	n25	693	1
Qta	Chaman	n25	126	2
Chaman	Kandahar	A75	116	3
Kandahar	Kabul	AH1	497	3
Kabul	Sher Khan	A76	398	4
Sher Khan	Dushanbe	A384	181	5

# Kyrgyzstan



## Kyrgyzstan

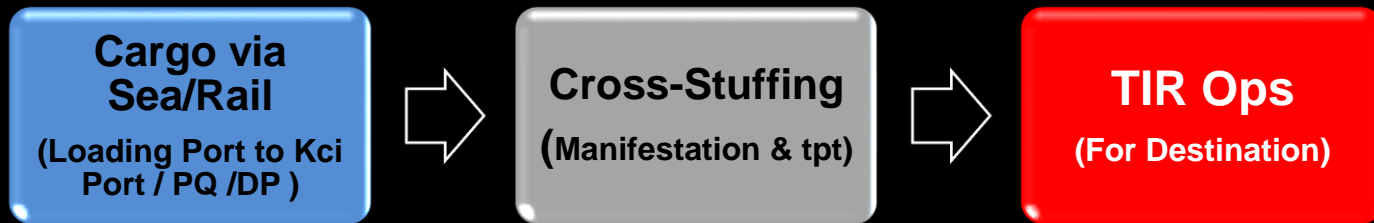
From	To	Highway No.	Section Dist (Km)	Day no.
Kci	Isl	N5	1411	2
Isl	Sost	N15, KKH	682	3
Sost	Kashgar	G314	460	4
Kashgar	Torugart Pass	S212	170	5
Torugart Pass	Bishkek	A365	504	6

- Globally applicable international customs transit & guarantee system
- Faster Border Crossing & Barrier free access to the world economy & market
- Simple, reliable and hassle-free movement, boosting Regional Connectivity
- Minimum transport costs & Shortest Routes, Flexibility and reduced landed cost.
- Development of regional value chain

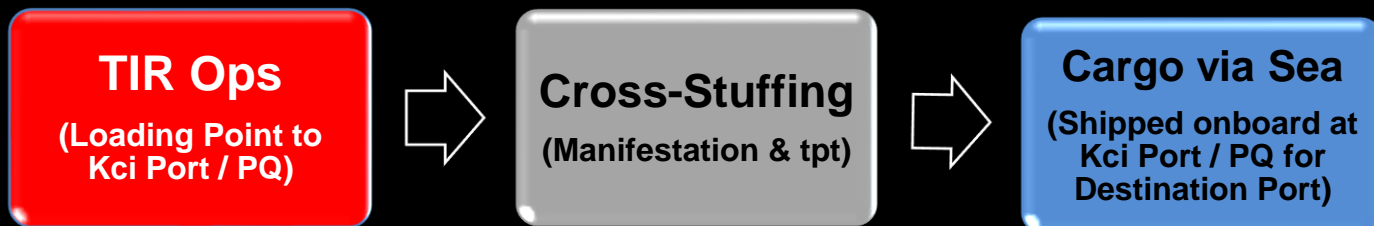
# **MULTI-MODAL LOG**

Involve trade shipments (containerized) routing through Pakistan using Kci Port & PQ (via sea), cross-stuffing at customs designated terminals (NLC) and TIR ops (land routes) – **two way activities**

## **Shipments To Destination**



## **Back Shipments**



**THANKS**